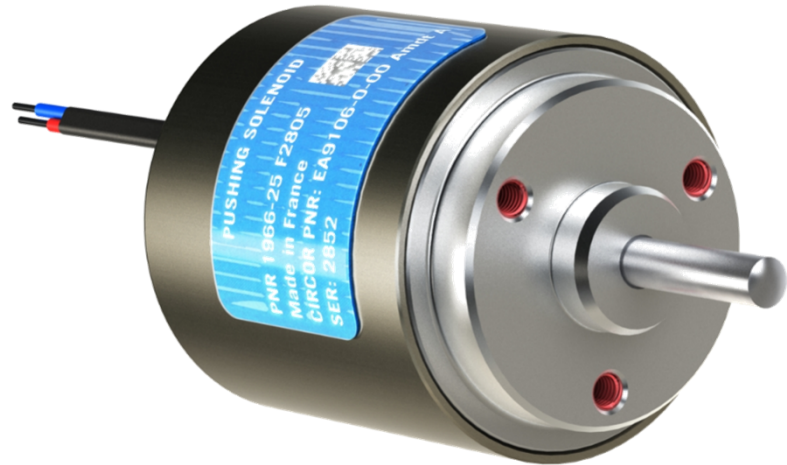


EA family SOLENOID Pushing or Pulling actuation

Pushing solenoid actuator



Electromagnetic suction cup



Pulling solenoid actuator

Applications/ Features:

- Pulling or pushing type.
- Fast response time (<20ms).
- Laser welded.
- Flange Mounted or Nose mounted.
- Single or Dual coil.
- High dielectric strength.
- High corrosion strength.
- Large stroke capacity.
- Ambient temperature: -55°C to +135 °C.
- Wire lead or connector type (EN2997, MIL-C-38999,...).
- Capacity: Up to 200 N.
- Certification: RTCA/DO-160, MIL-STD-810.

